

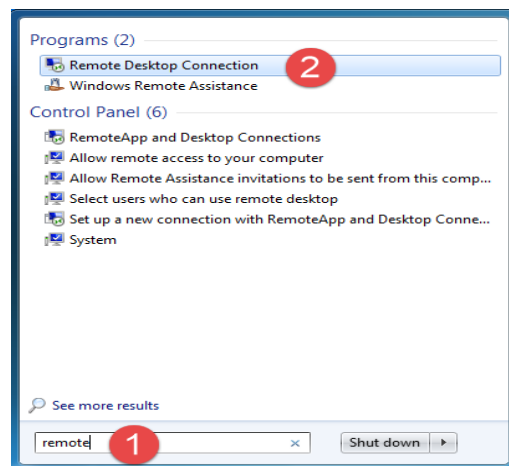
How-To Access the Azure Enclave using Remote Desktop Connection (RDC) in Windows

Prerequisites

- Access to your Project Workspace in the Azure Enclave has been provisioned.
- You received a unique **Azure Enclave Project Workspace IP Address** to connect to your Project Workspace using Remote Desktop Connection (RDC).
- You must access your Azure Enclave project workspace either on an approved computer within the Mass General Brigham (MGB) network or via MGB VPN.

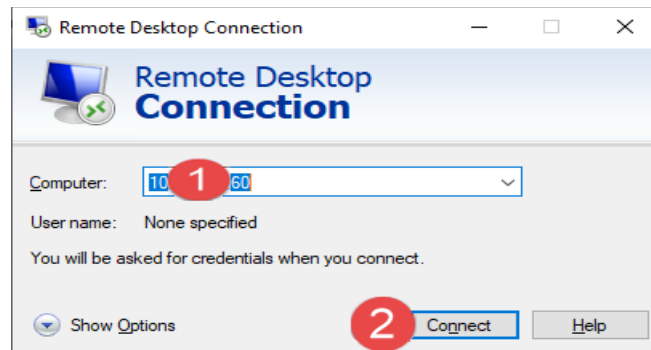
How to open Remote Desktop Connection (RDC)

On your windows pc, search to find and open the *Remote Desktop Connection* client.

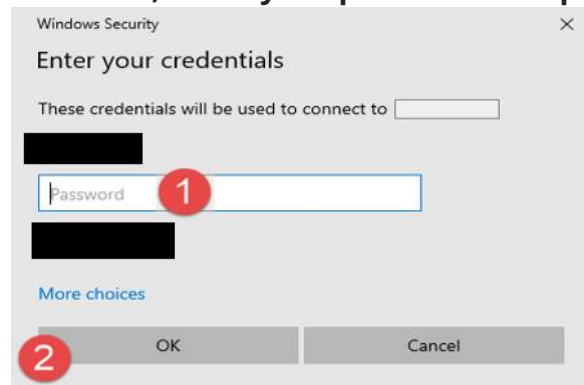


Connect to the Azure Enclave

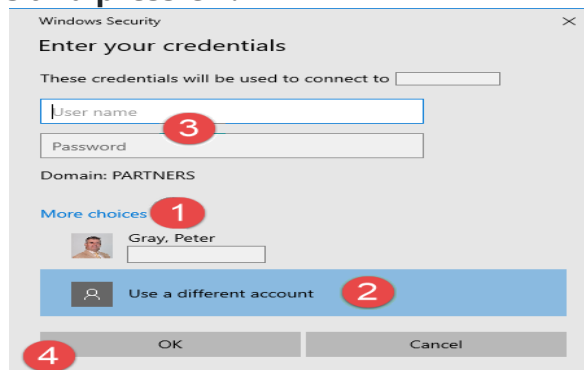
First, type the full unique IP address provided to you once your ServiceNow project workspace access request was provisioned, and then click on the *Connect* button.



Then RDS asks for user credentials that you want to use to sign in on the Azure Enclave project workspace. If the user account selected by default is your MGB user id prefaced by *PARTNERS*, enter your password and press *OK*.



If the Domain is not *PARTNERS*, sign in using another account by clicking *More Choices, Use Another Account*, and selecting your *PARTNERS* domain account. Enter your credentials and press *OK*.



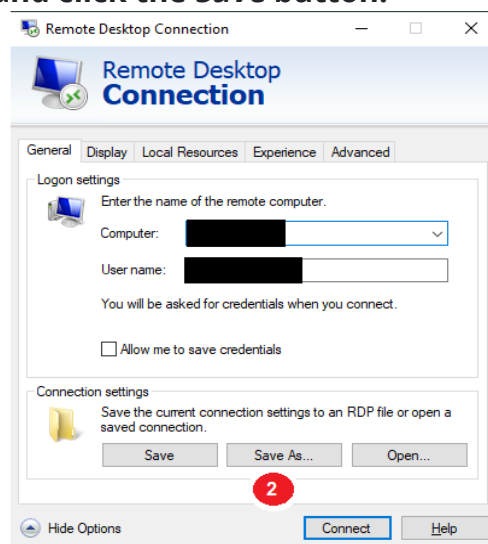
After you press *OK*, RDS will connect to your project workspace in the Azure Enclave. You may see a warning about connecting – it is safe to click *YES* and continue.

After connecting and a couple of moments*, you should see your Azure Enclave project workspace open in a separate window.

**If this is the first time connecting to your workspace, please allow for some initial extra workspace configuration time to finalize setup*

Create a Remote Desktop Connection shortcut

After successfully connecting using the RDC application, click the *Show Options* button. Click the *Save As* button. Choose a location where you want to save the shortcut. Enter a name and click the *Save* button.



Access Shared Workspace (F Drive)

Open *file explorer* and select *This PC*. The Data (F:) drive is the shared project workspace location. All project workspace members are granted full permissions to this drive.

