

User Guide - How to Connect to MS SQL Database Server from Data Enclave Linux VDI using DBeaver

- Overview
- Step 1. Find and invoke DBeaver application
- Step 2. Configure the connection to MS SQL Database
- Step 3. Make the database connection and browse the data

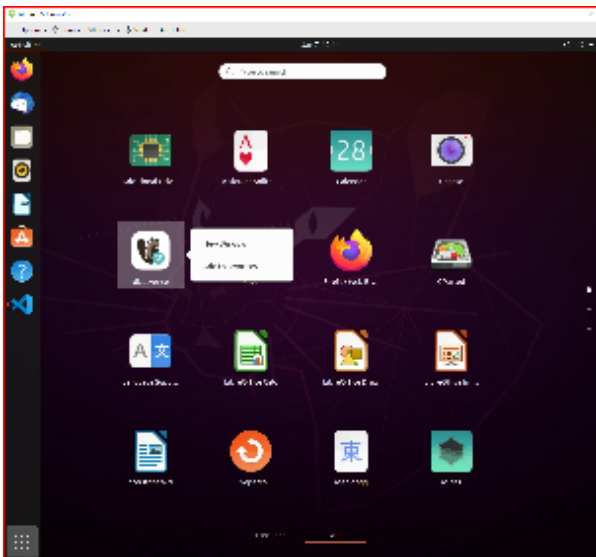
Overview

DBeaver is a [SQL](#) client software application and a [database administration](#) tool. For [relational databases](#) it uses the [JDBC application programming interface](#) (API) to interact with databases via a JDBC driver.

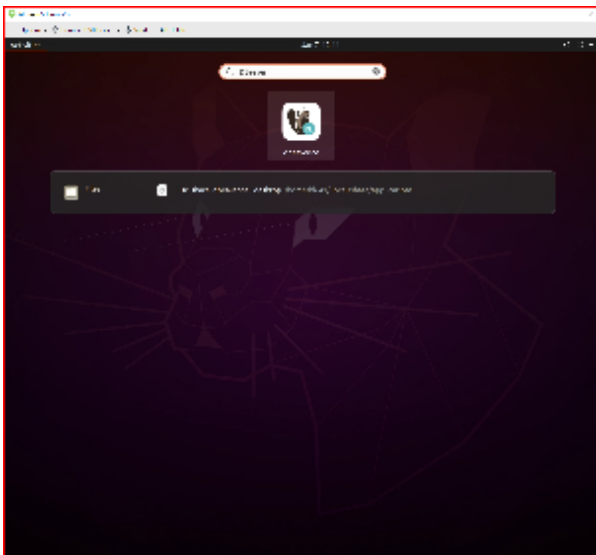
In the Data Enclave Linux VDI, you can use DBeaver to connect to MS SQL Database Server. The solution is provided as a minimum set of the instructions for the user to make the connection.

Step 1. Find and invoke DBeaver application

In the Linux VDI, go to Show Applications icon and bring up All applications. Find dbeaver-ce icon



or type DBeaver in the search column to find it.



- Click on the icon to invoke the DBeaver application. (Community Edition)
- You can close the tip of the day and go to the Database Navigator.

Step 2. Configure the connection to MS SQL Database

As an example, we will configure the connection to the i2b2 database in the MS SQL Database Server instance mssql01.analyticsenclave.org. Here are the details of the steps.

1. Use the Database tab to Make a New Database Connection
2. Select MS SQL Server icon
3. Enter SQL Server Connection Settings

```
Server = mssql01.analyticsenclave.org
Port = 1433
Database = i2b2
Authentication = ntlmv2
```

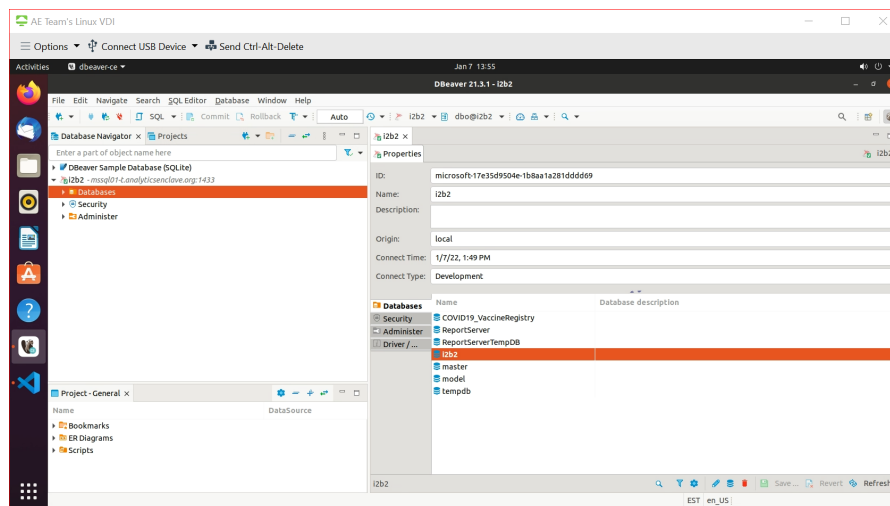
4. Hit Test Connection on the left bottom to test the database connection
5. Click OK after the test shows Connected and then click Finish button.

You will see the i2b2 Database shows up in the Database Navigator Window.

Step 3. Make the database connection and browse the data

Once the database is connected, i2b2 in this example case,

you can use the Database Navigator to browse the database propertise



and browse the database tables.

