

DELL Technologies

LATITUDE
7340/7440
ULTRALIGHT

Premium look. Premium weight.



LATITUDE

7340/7440 ULTRALIGHT

Premium look. Premium weight.

Premium features provide outstanding collaboration, amazing audio and visuals, and intelligent performance in an ultralight design.

Ideal for Team Leaders, Directors, Project/Product Managers, etc. who are driven to connect teams and ensure collaboration. They need high performance with seamless collaboration and connectivity for at-the-desk or on-the-go versatility.



• • •
World's Smallest and Lightest 13.3" Premium Commercial Laptop

13" ultralight config starts at 0.982 kg / 2.17 lbs.³⁷

• • •
World's Smallest and Lightest 14" Premium commercial laptop

New 14" Ultralight config starting at 1.06 kg / 2.33 lbs.³⁷

• • •
Up-leveled audio Best audio quality ever in a 7000 series. Featuring quad speakers, including two top-firing and two bottom-firing speakers; richer bass; and 15% gen-over-gen improvement in loudness³⁸.

• • •
Utilize 2 or more networks at once with **ExpressConnect, world's 1st simultaneous multi-network connection** for faster data and video downloads¹⁷.

• • •
Wi-Fi³⁹ 6E & 5G option
Work from anywhere at the industry's fastest speeds.

• • •
Charge faster, work longer
Work from anywhere longer with up to a 57Whr battery. Charge up to 80% within an hour with ExpressCharge²⁰.

• • •
Intelligent Privacy features: Onlooker Detection – alerts you of onlookers and texturizes your screen to protect your data. **Look-away Detect** – knows when you're not looking at screen & dims for privacy and battery savings.

• • •
Premium materials
Ultralight magnesium in sophisticated River color for the ultimate in portability and durability.

• • •
New 16:10 premium panels
FHD+ displays featuring taller 16:10 aspect ratios with 5% more screen space. Options for Touch, QHD+ resolution (14" only), ComfortView Plus, and Battery-saving Super Low Power displays.

• • •
Look great on every call
5MP IR MIPI camera with temporal noise reduction that eliminates visual noise. A manual camera shutter protects your privacy.

• • •
New Mini-LED Battery-Saving Backlit Keyboard Technology
Reduces power drain by the keyboard up to 75% and increases battery life ⁴⁰.

• • •
Intelligent Audio with Neural Noise Cancellation
Collaborate confidently with AI-based background noise reduction.

• • •
Performance for today's multi-tasking
Intel vPro[®], an Intel[®] Evo[™] Design, enables maximum productivity. Powered by 13th Gen Intel[®] Core[™] processors.

• • •
Stays cool & quiet
Thermal innovations optimize performance with new rear venting and user selectable thermal tables.

• • •
ExpressSign-in
Wake your system when you approach and lock it when you step away.



• • •
Precision Clickpad
Larger touchpad with more room for navigation and glass-like feel for comfort & productivity⁴¹.

• • •
Innovative use of sustainable materials
Up to 42% bio-based material in bottom bumpers.



100% recycled or renewable packaging¹⁸

7340/7440 ULTRALIGHT

Sustainability on Dell Latitude 7000 series

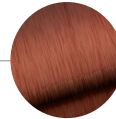
Delivering innovative technology and solutions to reduce our environmental impact, for ourselves and our customers.

Sustainable Materials

Our use of sustainable materials helps reduce the environmental impact of making and recycling them.



• Up to 42% bio-based rubber in the feet on the bottom of the product



• 50% recycled copper in the 100W AC cable

Packaging Innovation

Ships in new enhanced **100% recycled or renewable packaging that is also 100% recyclable¹⁸**. Multipack shipping available on eligible products.



Ecolabels

Eco-labeling standards drive sustainability further by helping customers understand electronic products and the companies that make them. This product meets the following standards:



Recycle

Securely and responsibly retire your IT equipment with Dell regardless of brand, in support of a circular economy.

Learn more at Dell.com/Recycle

See how we are reducing the impact of our products and solutions

Dell.com/Sustainable-Devices

LATITUDE

7340/7440 ULTRALIGHT

Dell Optimizer

We make it intelligent. You make it yours.

In a work-from-anywhere world, powering the world's most intelligent commercial PCs* is not enough, Dell Optimizer is extending personalized intelligence to the rest of the Dell ecosystem.

Dell Optimizer lets you accomplish anything with built-in intelligence that learns and adapts to the way you work.



Elevate everyday work with personalized performance extending from your Latitude to the devices within your workspace.



An intelligent ecosystem

Enjoy easy pairing and management of your Dell monitors and accessories with the integration of Dell Display Manager and Dell Peripheral Manager.



Intelligent privacy anywhere

This technology lets you texturize your screen when an intruder is detected and dims your PC when you look away. It also wakes your PC when your approach and locks it when you walk away.



Improved app performance

Analyzes how you use your preferred apps to boost performance.



Up level audio

Intelligent Audio delivers sound and mic enhancements reducing background noise using neural noise cancellation and voice quality monitoring.



Unmatched connectivity

ExpressConnect* provides the world's first simultaneous multinet network connection** that joins the best network* available.



Extended power

Express Charge analyzes your power usage habits to improve PC battery utilization and extends run times by charging your system faster when you need a boost in power.

With Dell Optimizer, optimization and data collection follow a stringent process to ensure your privacy and security.

[Click here to learn more about Dell Optimizer.](#)

7340/7440 ULTRALIGHT

Make yourself more resilient to cyberattacks with Dell Trusted Devices.

Attacks are inevitable. In fact, 69% of organizations report a cyber-attack due to a poorly managed internet-facing asset in the prior 12 months.* Dell Technologies understands that today's security challenges include managing an evolving threat landscape with a modern work environment in mind. With Dell commercial devices, catch and repel malicious activity before it compromises your system. Latitude, one of the industry's most secure commercial PCs**, offers layers of security features to keep you protected and give you visibility to threats for swift action.

Secure anywhere-work with hardware and firmware defenses built for our hyper-distributed world.



Stay protected from evolving threats

Our unique BIOS and firmware verification provides greater security than other PCs. Assess a corrupt BIOS, repair it and gain insights that reduce exposure to future threats.



Spot ticking timebombs

Indicators of Attack, an early-alert feature offered only by Dell, scans for behavior-based threats before they can do damage.



Detect chassis tampering

Detect unauthorized access, e.g., malicious implanted hardware or software, data/component theft inside system chassis.



Secure end user credentials

SafelD, a dedicated FIPS Level 3 certified security chip, keeps user credentials hidden from malware.



Be safe from first boot

Rigorous, state-of-the-art supply chain controls reduce the risk of product tampering. Optional additions like the Dell-unique Secured Component Verification provide additional assurance of device integrity.



Protect data everywhere

Stay protected against advanced threats with optional software-based protections from our ecosystem of best-of-breed partners (CrowdStrike, VMware Carbon Black, Secureworks, Netskope and Absolute).

*ESG Survey: Security, Hygiene and Posture Management, Jan. 2022

**Dell internal analysis, September 2022. Not all features available with all PCs. Additional purchase required for some features



OFFICE

RECOMMENDED SOLUTIONS



Dell UltraSharp 24 USB-C Hub Monitor – U2422HE (x2)

Take your work to new heights with this 23.8-inch FHD monitor featuring brilliant color coverage. Increase your productivity by up to 21% when you use two monitors together⁴³.



Thunderbolt 4 Dock - WD22TB4

Modular Thunderbolt 4 dock with swappable modules for easy upgrades and SuperBoost technologies for fast charging.



Dell UltraSharp Webcam - WB7022

Elevate your video conferencing experience with the world's best image quality 4K webcam⁴⁴ that optimizes your visuals with a large 4K Sony STARVIS™ CMOS sensor and AI Auto-Framing.



Dell Premier Wireless ANC Headset – WL7022

Collaborate with ease anywhere with this Teams certified wireless headset which offers active noise cancellation and smart sensors that automatically mute and unmute your call.

HOME



Dell 34 Curved Video Conferencing Monitor - C3422WE

Bring your meetings to life on this 34-inch curved WQHD monitor with an integrated IR camera, dual 5W speakers and a dedicated, one-touch Teams button.



Dell Dual Dock - HD22Q

Powerfully productive, this compact dock is the world's first laptop docking station with a wireless charging stand for Qi-enabled smartphone or earbuds⁴².
Cellular device not included



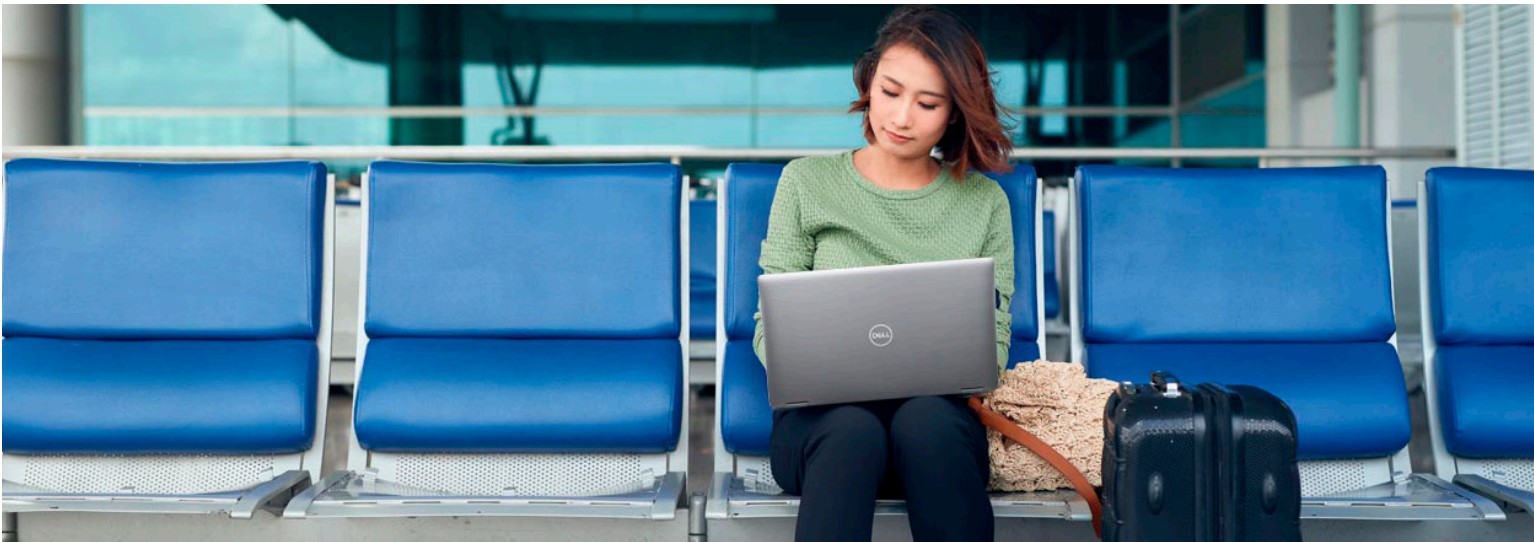
Dell Premier Multi-Device Wireless Keyboard and Mouse - KM7321W

Experience superior multitasking features with a stylish and comfortable premium keyboard and mouse combo. Complete your tasks powered by one of the industry's leading battery lives at up to 36 months⁴⁵.



Dell Speakerphone - SP3022

Experience crystal-clear conference calls with the world's most intelligent Microsoft Teams-certified speakerphone.



RECOMMENDED SOLUTIONS



14" Portable Monitor - C1422H

Experience dual-screen productivity anywhere with Dell's first-ever 14"



Dell EcoLoop Urban Backpack

Designed for organization and comfort, the Dell EcoLoop Urban Backpack is built with the environment in mind and easily complements any lifestyle



65W Power Bank Plus (USB-C, 65Whr) - PW7018LC

World's first notebook power bank to charge the widest range of USB-C laptops, as well as mobile devices



Mobile Speakerphone Adapter - MH3021P

A seamless, all-in-one conferencing and connectivity solution

ROAM

7340/7440 ULTRALIGHT

FEATURE TECHNICAL SPECIFICATION

TECHNICAL SPECIFICATION

MODEL NUMBER¹	Latitude 7340 (laptop)
CONFIGURATION OPTION	Latitude 7340 Ultralight
PROCESSOR OPTIONS¹	13 th Gen Intel® Core™ processors up to i7 U series vPro®
OPERATING SYSTEM¹	Microsoft® Windows 10 Pro (11 License with downgrade to Win 10) Microsoft® Windows 11 Home 64-bit Microsoft® Windows 11 Pro 64-bit Ubuntu® 22.04 LTS, 64-bit (Laptop only)
MEMORY OPTIONS^{1,2,3}	Up to 32 GB, LPDDR5, 4800 MT/s, integrated, dual channel 64 GB, LPDDR5x, 4800 MT/s, integrated, dual channel (coming soon)
CHIPSET¹	Integrated with the processor
INTEL RESPONSIVENESS TECHNOLOGIES^{1,7}	Intel® Rapid Storage Technology
GRAPHICS^{1,3}	Intel® Iris® Xe Graphics
DISPLAY¹	Laptop 13.3" FHD+ 16:10 Anti-glare, Non-Touch, Battery-saving, Wide Viewing Angle (WVA / IPS), 400 nits, ComfortView Plus Low Blue Light, Ultralight 13.3" FHD+ 16:10 Anti-glare, Touch, Wide Viewing Angle (WVA / IPS), 300 nits, Ultralight
STORAGE OPTIONS^{1, 3}	Up to 1 TB, M.2, PCIe NVMe, SSD, class 35 256 GB, M.2, PCIe NVMe, SED, class 35 2 TB, M.2, PCIe NVMe, SSD, class 25
SECURITY¹	TPM 2.0 FIPS 140-2 Certified, TCG Certified Optional Windows Hello Compliant Fingerprint Reader in power button Optional Face IR camera (Windows Hello compliant) with ExpressSign-in (Camera Sensing) Intelligent Privacy (onlooker detection with screen texturizing) Camera Shutter
	Dell Security Features Dell SafeBIOS - Verifies that BIOS is good using a secure off-host source, and if the test fails, captures and stores a copy in a secure area on the PC Dell SafeBIOS - Indicators of Attack - Alerts when malicious activity is detected Dell SafeSupply Chain - Optional tamper evident packing and pre-imaging HDD wipes to NIST standards from a secure Dell facility. Dell Intelligent Privacy powered by Dell Optimizer 4.0 - Texturizes the screen when a shoulder surfer tries to peek, dims the screen when user is disengaged. Intel ME Firmware Authentication (with Intel vPro) – Verifies that critical firmware is good using a secure off-host source Face IR camera (Windows Hello compliant) with ExpressSign-in 1.0 (Proximity Sensor), ExpressSign-in 2.0 (Camera Sensing) Optional Windows Hello compliant fingerprint reader in power button Optional Security Hardware Authentication Bundle: Dell Client Command Suite Dell Support Assist for Home PCs Dell Support Assist OS Recovery
	Additional Software Security Features Netskope™ Cloud Access Security Broker (CASB) Netskope™ Secure Web Gateway Netskope™ Zero Trust Private Access Vmware® Carbon Black Endpoint Standard Vmware® Carbon Black Endpoint Standard + Secureworks® Taegis™ XDR Bundle Vmware® Carbon Black Endpoint Advanced Vmware® Carbon Black Endpoint Enterprise Secureworks® Taegis™ XDR VMware® Workspace ONE Standard VMware® Workspace ONE Advanced VMware® Workspace ONE Enterprise Absolute® Endpoint - Visibility Absolute® Endpoint - Control Absolute® Endpoint - Resilience
DOCKING¹	(Docks are optional, sold separately) Dell Dual Charge Dock - HD22Q Dell Thunderbolt 4 Dock - WD22TB4 Dell USB-C Dock - WD19S 130W Dell USB-C Dock - WD19S 180W

MODEL NUMBER¹	Latitude 7440 (laptop)
CONFIGURATION OPTION	Latitude 7440 Ultralight
PROCESSOR OPTIONS¹	13 th Gen Intel® Core™ processors up to i7 U series vPro®
OPERATING SYSTEM¹	Microsoft® Windows 10 Pro (11 License with downgrade to Win 10) Microsoft® Windows 11 Home 64-bit Microsoft® Windows 11 Pro 64-bit Ubuntu® 22.04 LTS, 64-bit (Laptop only)
MEMORY OPTIONS^{1,2,3}	Up to 32 GB, LPDDR5, 4800 MT/s, integrated, dual channel 64 GB, LPDDR5x, 4800 MT/s, integrated, dual channel (coming soon)
CHIPSET¹	Integrated with the processor
INTEL RESPONSIVENESS TECHNOLOGIES^{1,7}	Intel® Rapid Storage Technology
GRAPHICS^{1,3}	Intel® Iris® Xe Graphics
DISPLAY¹	Laptop 14.0" FHD+ 16:10 Anti-glare, Non-Touch, Battery-saving, Wide Viewing Angle (WVA / IPS), 400 nits, ComfortView Plus Low Blue Light, Ultralight 14.0" QHD+ 16:10 Anti-glare, Touch, Battery-saving, Wide Viewing Angle (WVA / IPS), 400 nits, ComfortView Plus Low Blue Light, Ultralight
STORAGE OPTIONS^{1, 3}	Up to 1 TB, M.2, PCIe NVMe, SSD, class 35 256 GB, M.2, PCIe NVMe, SED, class 35 2 TB, M.2, PCIe NVMe, SSD, class 25
SECURITY¹	TPM 2.0 FIPS 140-2 Certified, TCG Certified Optional Windows Hello Compliant Fingerprint Reader in power button Optional Face IR camera (Windows Hello compliant) with ExpressSign-in (Camera Sensing) Intelligent Privacy (onlooker detection with screen texturizing) Camera Shutter
	Dell Security Features Dell SafeBIOS - Verifies that BIOS is good using a secure off-host source, and if the test fails, captures and stores a copy in a secure area on the PC Dell SafeBIOS - Indicators of Attack - Alerts when malicious activity is detected Dell SafeSupply Chain - Optional tamper evident packing and pre-imaging HDD wipes to NIST standards from a secure Dell facility. Dell Intelligent Privacy powered by Dell Optimizer 4.0 - Texturizes the screen when a shoulder surfer tries to peek, dims the screen when user is disengaged. Intel ME Firmware Authentication (with Intel vPro) – Verifies that critical firmware is good using a secure off-host source Face IR camera (Windows Hello compliant) with ExpressSign-in 1.0 (Proximity Sensor), ExpressSign-in 2.0 (Camera Sensing) Optional Windows Hello compliant fingerprint reader in power button Optional Security Hardware Authentication Bundle: Dell Client Command Suite Dell Support Assist for Home PCs Dell Support Assist OS Recovery
	Additional Software Security Features Netskope™ Cloud Access Security Broker (CASB) Netskope™ Secure Web Gateway Netskope™ Zero Trust Private Access Vmware® Carbon Black Endpoint Standard Vmware® Carbon Black Endpoint Standard + Secureworks® Taegis™ XDR Bundle Vmware® Carbon Black Endpoint Advanced Vmware® Carbon Black Endpoint Enterprise Secureworks® Taegis™ XDR VMware® Workspace ONE Standard VMware® Workspace ONE Advanced VMware® Workspace ONE Enterprise Absolute® Endpoint - Visibility Absolute® Endpoint - Control Absolute® Endpoint - Resilience
DOCKING¹	(Docks are optional, sold separately) Dell Dual Charge Dock - HD22Q Dell Thunderbolt 4 Dock - WD22TB4 Dell USB-C Dock - WD19S 130W Dell USB-C Dock - WD19S 180W

7340/7440 ULTRALIGHT

FEATURE TECHNICAL SPECIFICATION

MULTIMEDIA¹ 5MP IR MIPI with built-in camera shutter, ExpressSign-in™, Intelligent Privacy, Ambient Light sensor, Temporal Noise Reduction for high image quality
4x Top & Bottom Firing Speakers, Waves MaxxAudio Pro
2 x Noise Cancelling Microphones
Intelligent Audio with Neural Noise Cancellation
Universal Audio jack

POWER OPTIONS¹ 60W AC Ultralight Mini Adapter, USB Type-C
65W AC Adapter, USB Type-C
100W AC Adapter, USB Type-C

BATTERY OPTIONS¹⁶ 2 cell 38 Whr Li-Ion, ExpressCharge Boost™, ExpressCharge 1.0™, & Long Life Cycle capable
3 cell 57 Whr Li-Ion, ExpressCharge Boost™, ExpressCharge 1.0™, & Long Life Cycle capable

CONNECTIVITY OPTIONS¹ Microsoft Modern Standby Compliant
Wireless LAN Options⁸:
Intel® Wi-Fi 6E (6 where 6E unavailable) AX211, 2x2, 802.11ax, MU-MIMO, Bluetooth⁴⁶

Mobile Broadband Options¹⁰:
5G - Intel® 5000 Advanced 5G WWAN (DW5931), eSIM, Worldwide
5G - Intel® 5000 Advanced 5G WWAN (DW5931), No eSIM, China and Turkey
5G - Intel® 5000 Advanced 5G WWAN (DW5931), eSIM capable, AT&T, Verizon, T-Mobile - US only

PORTS, SLOTS & CHASSIS¹ 2x USB Type-C Thunderbolt™ 4.0 with Power Delivery & DisplayPort 1.4
1x USB 3.2 Gen 1, one with Power Share
1x HDMI 2.0
1x Optional external uSIM card tray (WWAN only)
1x Optional Touch Fingerprint Reader in Power Button
1 x Universal Audio jack
Wedge Shaped Lock slot

TOUCHPAD Technical specifications: Microsoft® Precision Clickpad

DIMENSIONS & WEIGHT¹⁵ Height (front): 0.66 in. / 16.67 mm
Height (rear): 0.69 in. / 17.60 mm
Width: 11.77 in / 299 mm
Depth: 8.38 in. / 212.90 mm
Starting Weight: 2.17 lbs. (0.982 kg)

REGULATORY AND ENVIRONMENTAL COMPLIANCE¹ Laptop: Regulatory Model: P178G; Regulatory Type: P178G001
ENERGY STAR
EPEAT Gold Registered. For specific country participation and rating, please see www.epeat.net
TCO compliant configurations available
Trade Agreements Acts (TAA) configurations available
Halogen-Free/ Arsenic-Free
BFR/PVC free⁹

INPUT¹ 10-Finger Touch Display (optional)
Microsoft® Precision Clickpad
Spill Resistant Non-Backlit Keyboard,
Spill Resistant Battery-saving Mini-LED Backlit Keyboard (optional)

SENSORS¹ Gyroscope, Digital Compass/Magnetometer, Accelerometer, GPS (via WWAN Card only), Ambient Light Sensor; Adaptive Thermal Performance (via Gyroscope/Accelerometer), Dell ExpressSign-In (via Camera-based proximity), Wake/Power on with lid open (via Hall sensor) *varies by size/model

SYSTEMS MANAGEMENT¹ Intel® vPro™ Technology (iAMT 12) (optional, requires Intel WiFi® Link WLAN and a vPro compatible processor), Dell Client Command Suite available (dell.com/command), Factory Installed Dell Client Command | Update, Dell Command | Power Manager | Dell Optimizer

WARRANTY AND SERVICE¹ Limited Hardware Warranty⁴, Standard 3 year Mail-in Service after Remote Diagnosis¹¹, optional 3, 4 and 5 year hardware warranty extensions, and 3-5 year Dell ProSupport contracts available¹²

PERIPHERAL ECOSYSTEM¹ Powerful docks, monitors and other accessories are designed and tested for the Latitude 7340 Ultralight enable seamless productivity to work from anywhere

SUSTAINABILITY 42% biobased material in rubber feet
50% post-consumer recycled plastic in battery frame
Packaging made from 100% recycled or renewable materials
PCR in power adapter enclosure: 90% for 100W, 50% for 60 and 65W.

TECHNICAL SPECIFICATION

5MP IR MIPI with built-in camera shutter, ExpressSign-in™, Intelligent Privacy, Ambient Light sensor, Temporal Noise Reduction for high image quality
4x Top & Bottom Firing Speakers, Waves MaxxAudio Pro
2 x Noise Cancelling Microphones
Intelligent Audio with Neural Noise Cancellation
Universal Audio jack

60W AC Ultralight Mini Adapter, USB Type-C
65W AC Adapter, USB Type-C
100W AC Adapter, USB Type-C

2 cell 38 Whr Li-Ion, ExpressCharge Boost™, ExpressCharge 1.0™, & Long Life Cycle capable
3 cell 57 Whr Li-Ion, ExpressCharge Boost™, ExpressCharge 1.0™, & Long Life Cycle capable

Microsoft Modern Standby Compliant
Wireless LAN Options⁸:
Intel® Wi-Fi 6E (6 where 6E unavailable) AX211, 2x2, 802.11ax, MU-MIMO, Bluetooth⁴⁶

Mobile Broadband Options¹⁰:
5G - Intel® 5000 Advanced 5G WWAN (DW5931), eSIM, Worldwide
5G - Intel® 5000 Advanced 5G WWAN (DW5931), No eSIM, China and Turkey
5G - Intel® 5000 Advanced 5G WWAN (DW5931), eSIM capable, AT&T, Verizon, T-Mobile - US only

2x USB Type-C Thunderbolt™ 4.0 with Power Delivery & DisplayPort 1.4
2x USB 3.2 Gen 1, one with Power Share
1x HDMI 2.0
1x Optional external uSIM card tray (WWAN only)
1x Optional Touch Fingerprint Reader in Power Button
1 x Universal Audio jack
Wedge Shaped Lock slot

Technical specifications: Microsoft® Precision ClickpadS

Height (front): 0.68 in. / 17.15 mm
Height (rear): 0.71 in. / 17.95 mm
Width: 12.32 in. / 313.0 mm
Depth: 8.67 in. / 220.2 mm
Starting Weight: 2.33 lbs (1.06 kg)

Laptop: Regulatory Model: P176G; Regulatory Type: P176G001
ENERGY STAR
EPEAT Gold Registered. For specific country participation and rating, please see www.epeat.net
TCO compliant configurations available
Trade Agreements Acts (TAA) configurations available
Halogen-Free/ Arsenic-Free
BFR/PVC free⁹

10-Finger Touch Display (optional)
Microsoft® Precision Clickpad
Spill Resistant Non-Backlit Keyboard,
Spill Resistant Battery-saving Mini-LED Backlit Keyboard (optional)

Gyroscope, Digital Compass/Magnetometer, Accelerometer, GPS (via WWAN Card only), Ambient Light Sensor; Adaptive Thermal Performance (via Gyroscope/Accelerometer), Dell ExpressSign-In (via Camera-based proximity), Wake/Power on with lid open (via Hall sensor) *varies by size/model

Intel® vPro™ Technology (iAMT 12) (optional, requires Intel WiFi® Link WLAN and a vPro compatible processor), Dell Client Command Suite available (dell.com/command), Factory Installed Dell Client Command | Update, Dell Command | Power Manager | Dell Optimizer

Limited Hardware Warranty⁴, Standard 3 year Mail-in Service after Remote Diagnosis¹¹, optional 3, 4 and 5 year hardware warranty extensions, and 3-5 year Dell ProSupport contracts available¹²

Powerful docks, monitors and other accessories are designed and tested for the Latitude 7440 Ultralight enable seamless productivity to work from anywhere

42% biobased material in rubber feet
35% post-consumer recycled plastic in hinge caps and palmrest cap
Packaging made from 100% recycled or renewable materials
PCR in power adapter enclosure: 90% for 100W, 50% for 60 and 65W.

Product Disclosures:

*Based on Dell analysis, October 2022. Dell Optimizer not available in OptiPlex 3000 series, Latitude Chromebook Enterprise, and Linux-based devices. Feature availability and functionality may vary by model. For more details visit: <https://www.delltechnologies.com/asset/en-us/solutions/business-solutions/technical-support/dell-optimizer-features-availability-matrix.pdf.external>

**Disclaimer: Simultaneous multi-network connection (or Connection based teaming) is a new connectivity feature under ExpressConnect. It simultaneously sends and receives data and video traffic using two or more wired or wireless connections. Simultaneous multi-network connection works with wired and wireless networks. For select Dell platforms, a USB Wi-Fi adapter is required to connect a second Wi-Fi network. Based on Dell internal analysis, September 2021.

1 Offering may vary by country and by configuration and operating system.

2 A 64-bit operating system is required to support 4GB or more of system memory.

3 GB means 1 billion bytes and TB equals 1 trillion bytes; actual capacity varies with preloaded material and operating environment and will be less.

4 Limited Hardware Warranty: For copy of Limited Hardware Warranty, write Dell USA LP, Attn: Warranties, One Dell Way, Round Rock, TX 78682 or see www.dell.com/warranty.

6 The stated Watt Hour (Whr) is not an indication of battery life. 6The stated Watt Hour (Whr) is not an indication of battery life

7 Intel Rapid Storage Technology requires a HDD, mSATA, or an SSD, as primary storage device and Windows OS required

8 Wireless antenna available only at time of system purchase.

9 Dell Latitude 7330/7430/7530 are brominated flame retardant free (BFR-free) and polyvinyl chloride free (PVC-free); meeting the definition of BFR-/PVC-free as set forth in the iNEMI Position Statement on the 'Definition of Low-Halogen Electronics (BFR-/CFR-/PVC-free)'. Plastic parts contain less than 1,000 ppm (0.1%) of bromine (if the Br source is from BFRs) and less than 1,000 ppm (0.1%) of chlorine (if the Cl source is from CFRs or PVC or PVC copolymers). All printed circuit board (PCB) and substrate laminates contain bromine/chlorine total less than 1,500 ppm (0.15%) with a maximum chlorine of 900 ppm (0.09%) and maximum bromine being 900 ppm (0.09%).

10 4G LTE antenna and 5G available only at time of system purchase. Mobile Broadband Subject to service provider's broadband subscription and coverage area; additional charges apply.

11 Mail-in Service after Remote Diagnosis: Remote Diagnosis is determination by online/phone technician of cause of issue; may involve customer access to inside of system and multiple or extended sessions. If issue is covered by Limited Hardware Warranty (www.dell.com/warranty) and not resolved remotely, technician and/or part will be dispatched, usually within 1 business day following completion of Remote Diagnosis. Availability varies. Other conditions apply.

12 Dell Services: Availability and terms of Dell Services vary by region. For more information, visit www.dell.com/servicesdescriptions.

13 GB means 1 billion bytes and TB equals 1 trillion bytes; significant system memory may be used to support graphics, depending on system memory size and other factors.

15 Weights vary depending on configuration and manufacturing variability; 0.990 kg configurability: up to i7 vPro (U15), FHD NT Ultralight LCD, WLAN, 41Whr battery, M.2 2230 class 35 SSD, No security, non-backlit KB.

17 ExpressConnect available with Dell Optimizer software version 2.0 and onwards. Download the latest at <https://www.dell.com/support/home>.

Simultaneous multi-network connection (or connection-based teaming) is a new connectivity feature under ExpressConnect. It simultaneously sends and receives data and video traffic using two or more wired or wireless connections. Based on Dell internal analysis, October 2021.

18 New packaging is made with up to 40.8% recycled content and up to 64.4% renewable content in the form of renewable paper fibers. Material makeup varies by product and size. Excludes optional items added to order and included in box. Paper packaging materials can be recycled via municipal recycling, where available. System bag is made from recycled plastic and can be recycled along with other thin plastics.

20 ExpressCharge must be enabled within Dell Power Manager software. System must be powered off or in hibernation mode for ExpressCharge feature to function. After charging has reached the stated capacity, charging speed will return to normal speed. Recommended for use with the provided Dell power adapter; not recommended with a smaller capacity power adapter. Charging times may vary.

37 Based on Dell internal analysis, October 2022.

38 Based on Dell internal analysis, October 2022.

39 WiFi 6E requires Windows 11 Operating system and compatible router. Router requires a separate purchase. WiFi 6E connectivity is only available in select locations. Check availability with your service provider.

40 Based on Dell Internal Analysis, October 2022.

41 7340 ultralight is 33% larger than prior generation and 7440 ultralight is 24% larger than prior generation. Based on Dell internal analysis, November 2022.

42 For Qi-enabled smartphones and earbuds. Based on analysis of competitive products, using publicly available data – November 2021.

43 Source: Based on Principled Technologies Report commissioned by Dell, November 2018. Actual results will vary.

Full report: https://www.principledtechnologies.com/Dell/P2419H_monitor_productivity_1118.pdf

44 Based on Dell analysis comparing against competitive personal conferencing speakerphones, September 2021.

45 Based on Dell analysis of battery life usage model calculations, Nov. 2020. Results vary depending on use, operating conditions and other factors.

46 The Bluetooth wireless card version may vary depending on the operating system that is installed on your computer.